



AUGUST 2021

# 2014-18 VOLKSWAGEN 2.0L TSI MK7 POWERMAX STAGES 1 & 2

**Garrett**  
ADVANCING MOTION

# 2014-18 Volkswagen 2.0L TSI MK7 PowerMax Stages 1 & 2



## Turbocharger Kit Part Numbers

Part Number	Stage	Power	Model	Comp Ind	Comp Exd	Turb Ind	Turb Exd
898199-5001W	Stage 1	485HP   362kW	GT2260S	47mm	60mm	50mm	45mm
898200-5001W	Stage 2	600HP   447kW	G25-660	54mm	67mm	54mm	49mm



**P**owerMax™ direct fit performance turbocharger kits are engineered for increased engine performance while maintaining OEM direct fitment. With professional engine calibration and tuning, the optimized compressor aero will increase flow and outperform the stock turbocharger.

# Vehicle Fitment Information

## Turbocharger Kit Part Numbers

Part Number	Stage	Power	Model	Comp Ind	Comp Exd	Turb Ind	Turb Exd
898199-5001W	Stage 1	485HP   362kW	GT2260S	47mm	60mm	50mm	45mm
898200-5001W	Stage 2	600HP   447kW	G25-660	54mm	67mm	54mm	49mm

Make	Vehicle Model	Year	Body & Trim	Engine & Transmission	Turbocharger Model
Audi	TT	2014 +	Base	2.0L L4 - Gas	IS20
Audi	TTS	2014 +	Base	2.0L L4 - Gas	IS38
Audi	A3	2015 - 18	Premium, Premium Plus, Prestige	2.0L L4 - Gas	IS20
Audi	A3 Quattro	2015 - 18	Premium, Premium Plus, Prestige	2.0L L4 - Gas	IS20
Audi	S3	2015 - 18	Premium Plus, Prestige	2.0L L4 - Gas	IS38
VW	Golf	2015	S, SE, SEL, Launch Edition	2.0L L4 - Gas	IS12
VW	Golf GTI	2015	Autobahn, S, SE	2.0L L4 - Gas	IS20
VW	Golf R	2015	Base	2.0L L4 - Gas	IS38
VW	Golf	2016	Base, S, SE, SEL	2.0L L4 - Gas	IS12
VW	Golf GTI	2016	Autobahn, S, SE	2.0L L4 - Gas	IS20
VW	Golf R	2016	Base	2.0L L4 - Gas	IS38
VW	Golf	2017	S, Wolfsburg Edition	2.0L L4 - Gas	IS12
VW	Golf Alltrack	2017	S, SE, SEL	2.0L L4 - Gas	IS12
VW	Golf GTI	2017	Autobahn, S, SE	2.0L L4 - Gas	IS20
VW	Golf R	2017	Base	2.0L L4 - Gas	IS38
VW	Golf	2018	S, SE, SEL	2.0L L4 - Gas	IS12
VW	Golf Alltrack	2018	S, SE, SEL	2.0L L4 - Gas	IS12
VW	Golf GTI	2018	Autobahn, S, SE	2.0L L4 - Gas	IS20
VW	Golf R	2018	Base	2.0L L4 - Gas	IS38

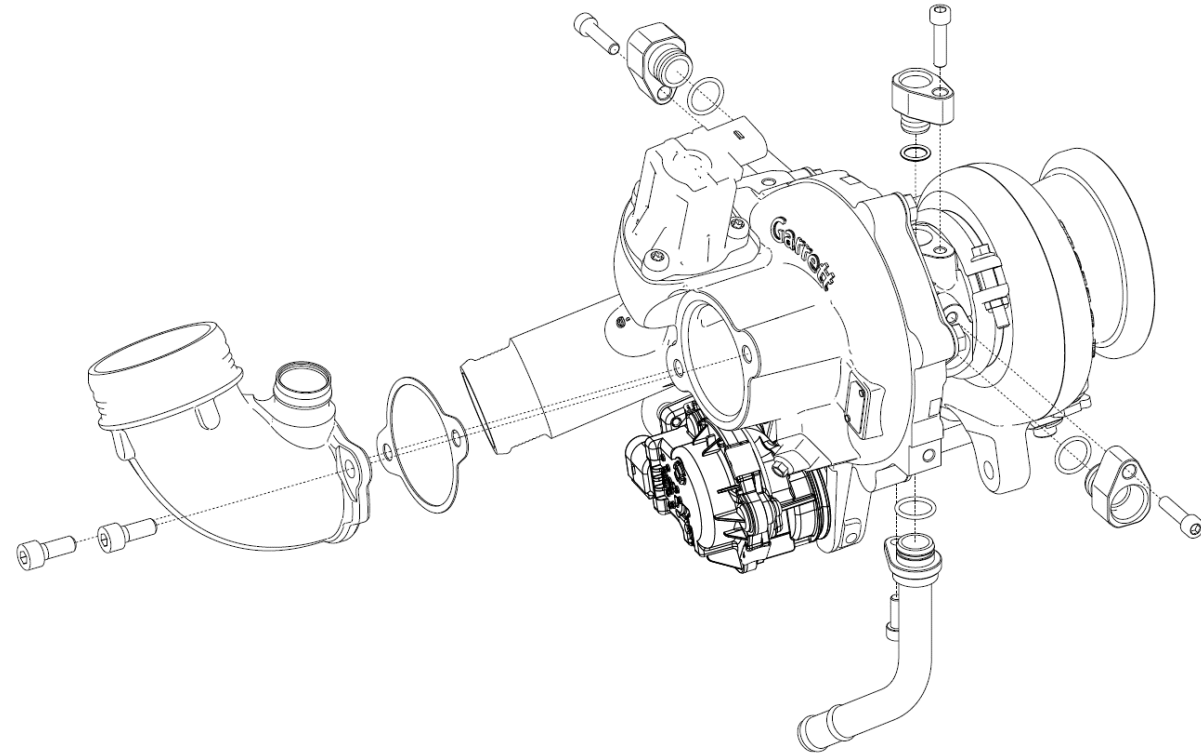
OE turbocharger part numbers (current revisions)  
 IS12 - 06K124713L  
 IS20 - 06K145874M  
 IS38 - 06K145722H



# Stage 1 (GT2260S) - 898199-5001W

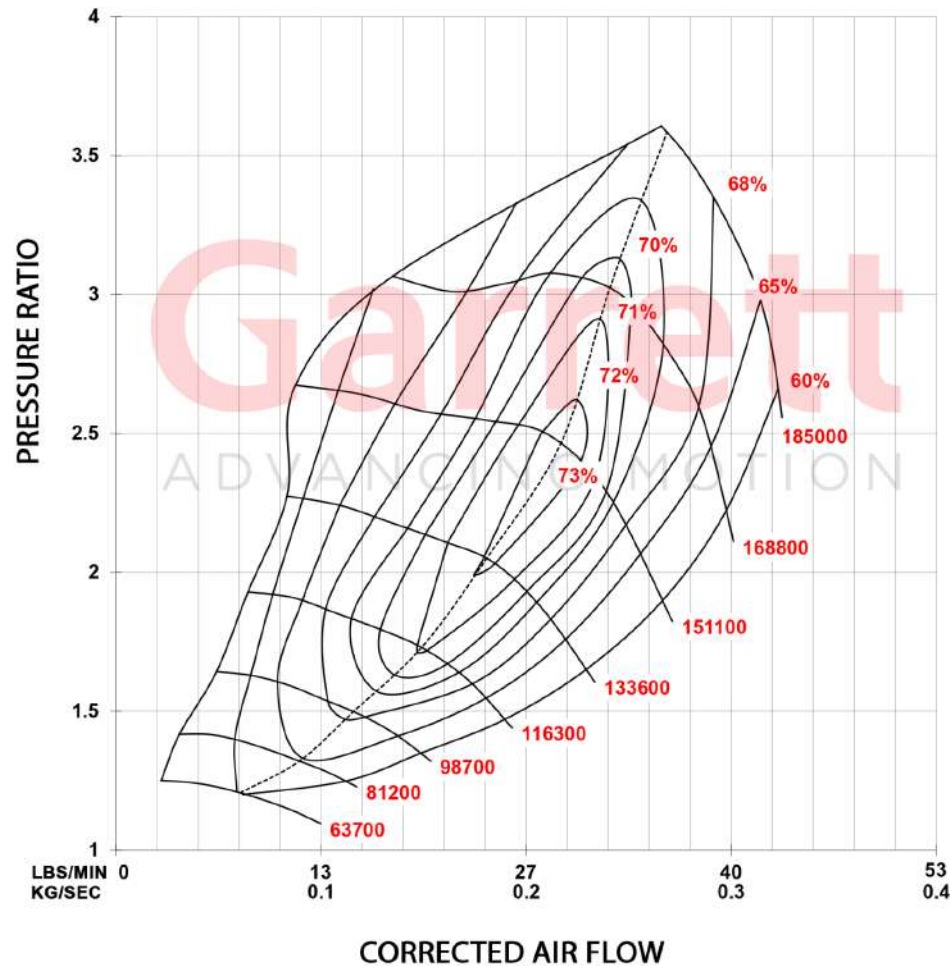
## Features

- Direct-Fit Stage 1 Upgrade
  - Audi A3, S3, TT, TTS
  - VW Golf Base, AllTrack, GTI and R
- Complete assembly with calibrated electric actuator and ancillary components for OE fitment
- 485 flywheel horsepower capability (on-vehicle results)
- +17% flow compared to IS38 turbo (stock Golf R)
- GTX Gen II compressor wheel aero
- Modern gasoline turbine wheel aerodynamics constructed of Mar-M alloy rated for up to 1050C
- Stainless steel turbine housing rated for up to 1050C
- Fully machined speed sensor port
- Latest generation of journal bearing rotor group
- 360-degree thrust bearing – reinforced for application



See Website for Installation Instructions

# Stage 1 (GT2260S) - 898199-5001W

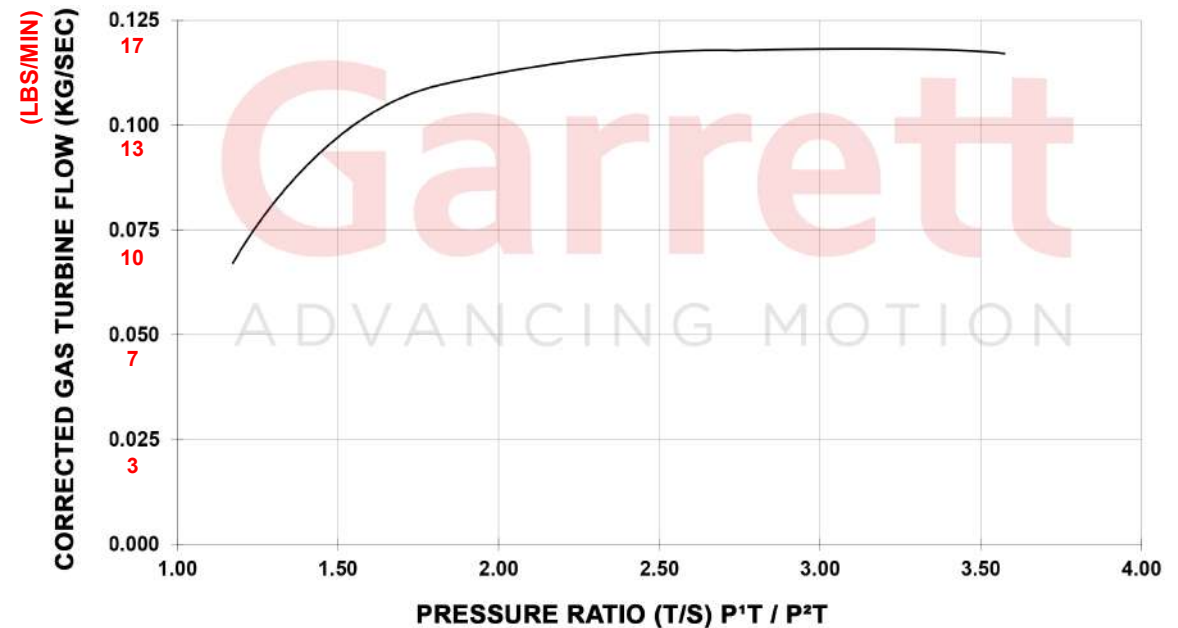


## Compressor Specs

- Inducer = 47mm
- Exducer = 60mm
- Trim = 62
- A/R = 0.70
- Flow: 42 lbs/min

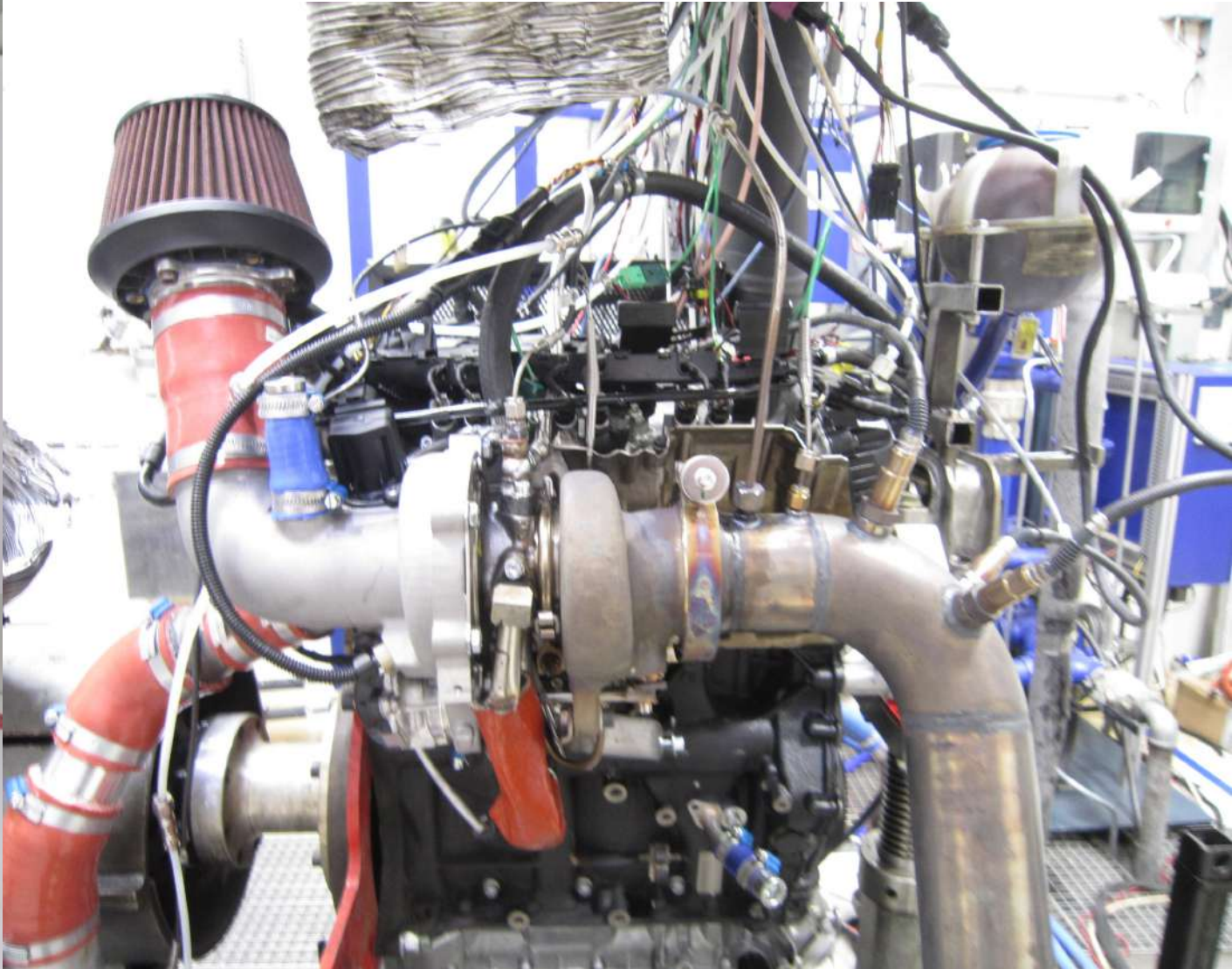
## Turbine Specs

- Inducer = 50mm
- Exducer = 45mm
- Trim = 81
- A/R = 0.64
- Flow: 16 lbs/min



**485 Horsepower (On-Vehicle Results)**

# Stage 1 (GT2260S) - 898199-5001W



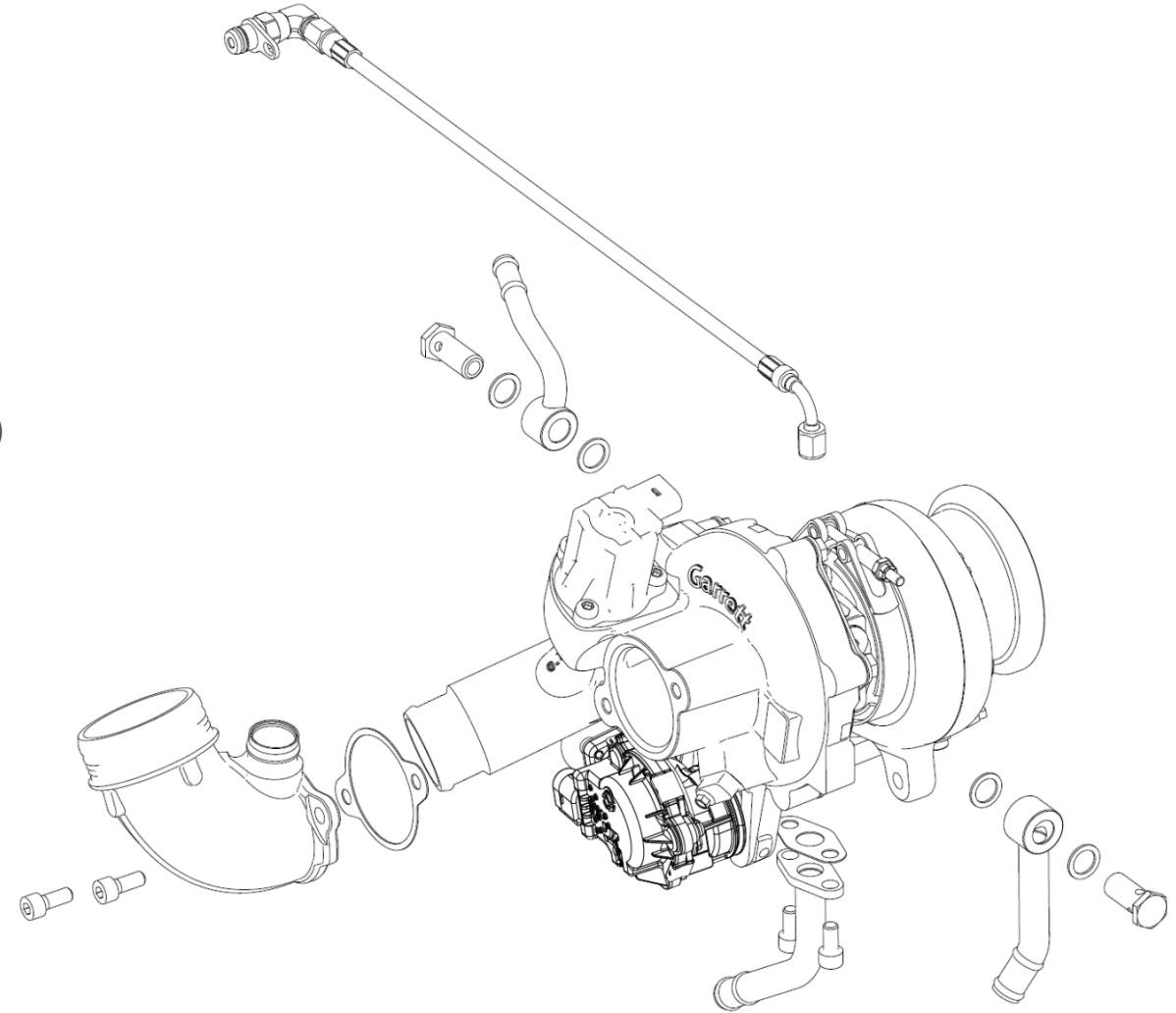
Engine Dyno Developed and Qualified



# Stage 2 (G25-660) - 898200-5001W

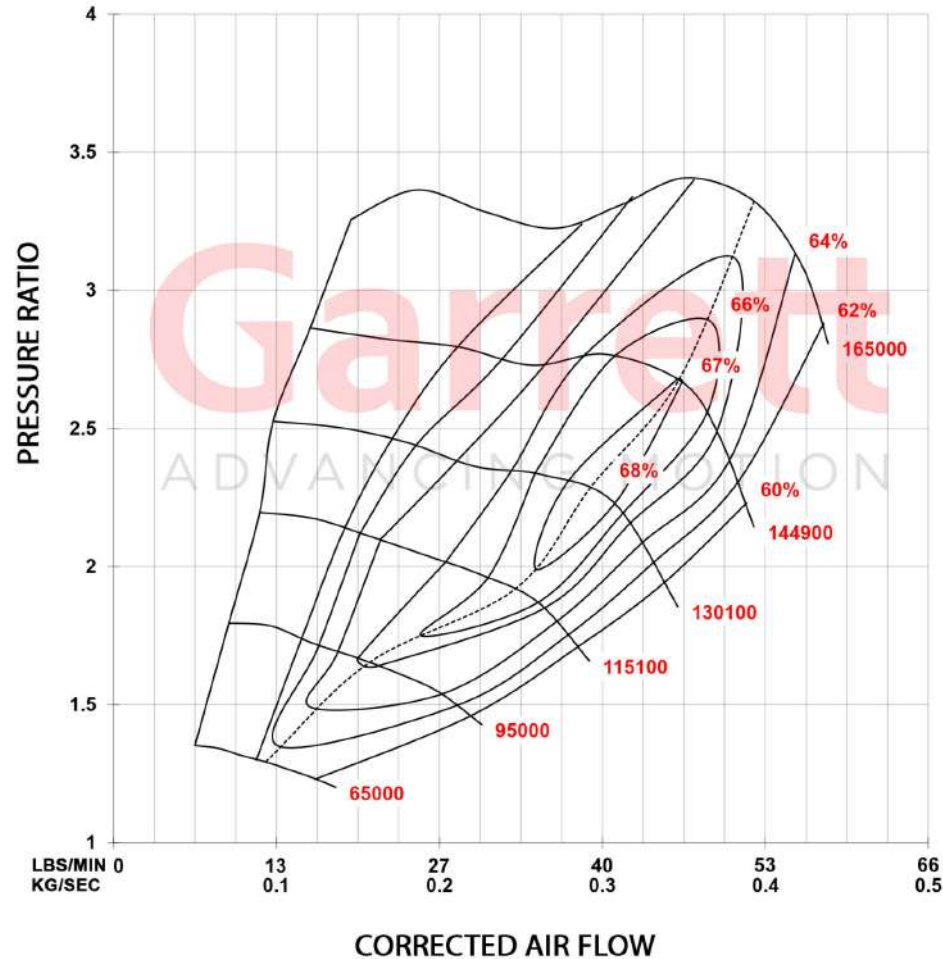
## Features

- Direct-Fit Stage 2 Upgrade
  - Audi A3, S3, TT, TTS
  - VW Golf Base, AllTrack, GTI and R
- Complete assembly with calibrated electric actuator and ancillary components for OE fitment
- 600 flywheel horsepower capability (on-vehicle results)
- +59% flow compared to IS38 turbo (stock Golf R)
- G-Series compressor wheel aerodynamics for maximum horsepower
- G-Series turbine wheel aerodynamics constructed of Mar-M alloy rated for up to 1050C
- Stainless steel turbine housing rated for up to 1050C
- Fully machined speed sensor port
- Ball-bearing



See Website for Installation Instructions

# Stage 2 (G25-660) - 898200-5001W

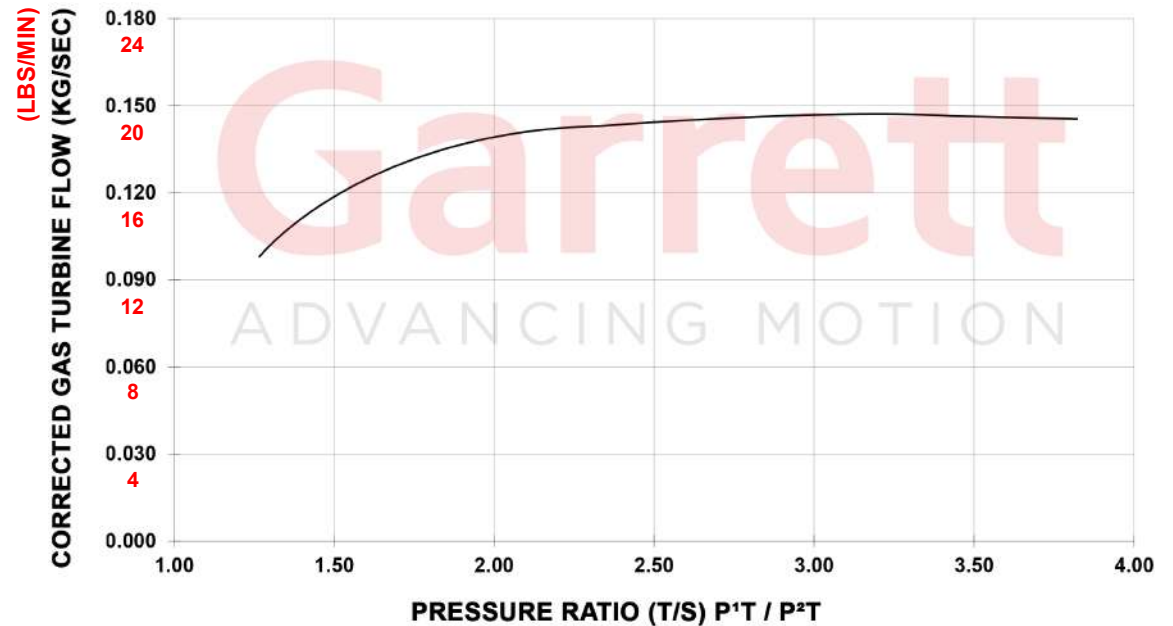


## Compressor Specs

- Inducer = 54mm
- Exducer = 67mm
- Trim = 65
- A/R = 0.70
- Flow: 57 lbs/min

## Turbine Specs

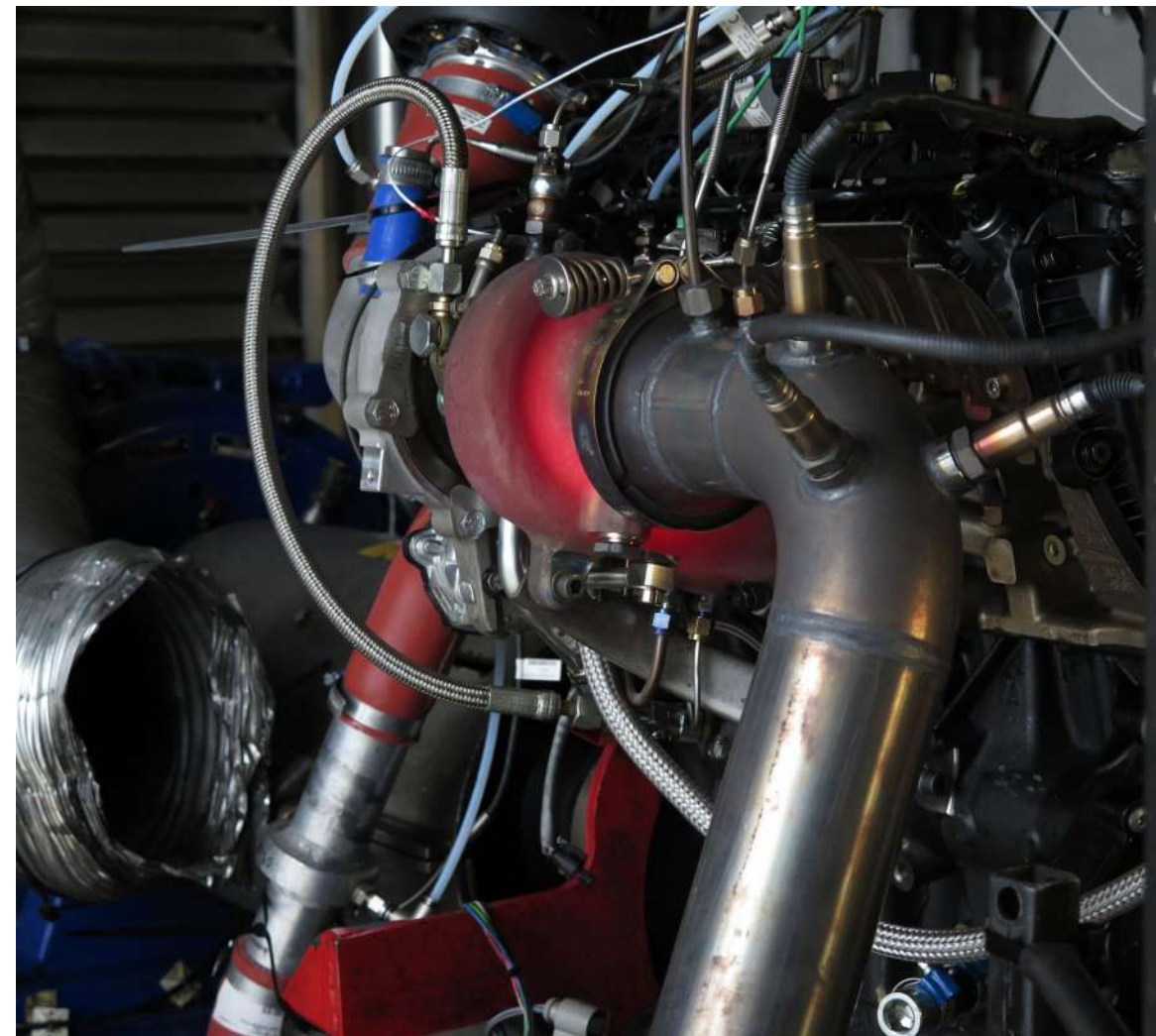
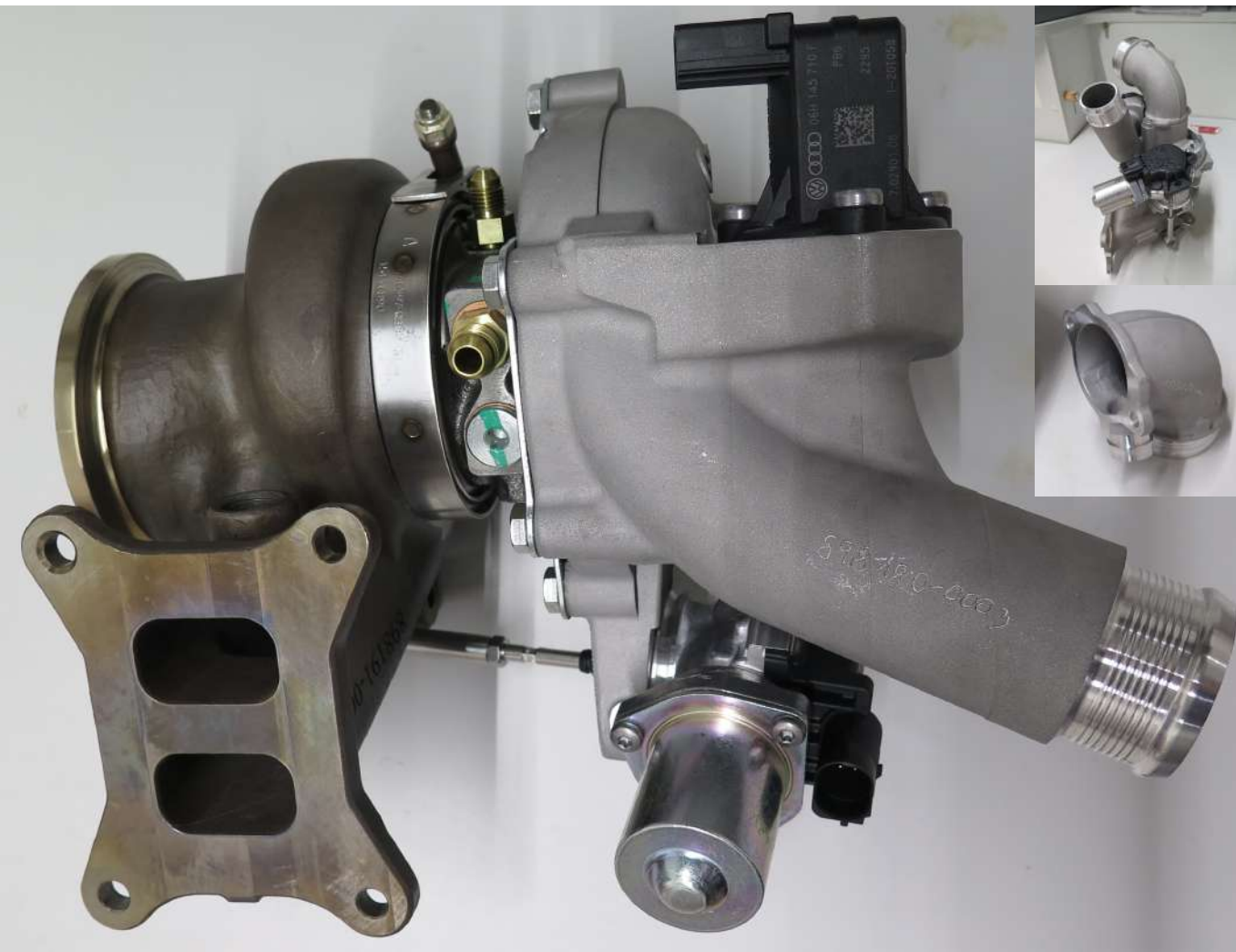
- Inducer = 54mm
- Exducer = 49mm
- Trim = 84
- A/R = 0.72
- Flow: 20 lbs/min



600 Horsepower (On-Vehicle Results)

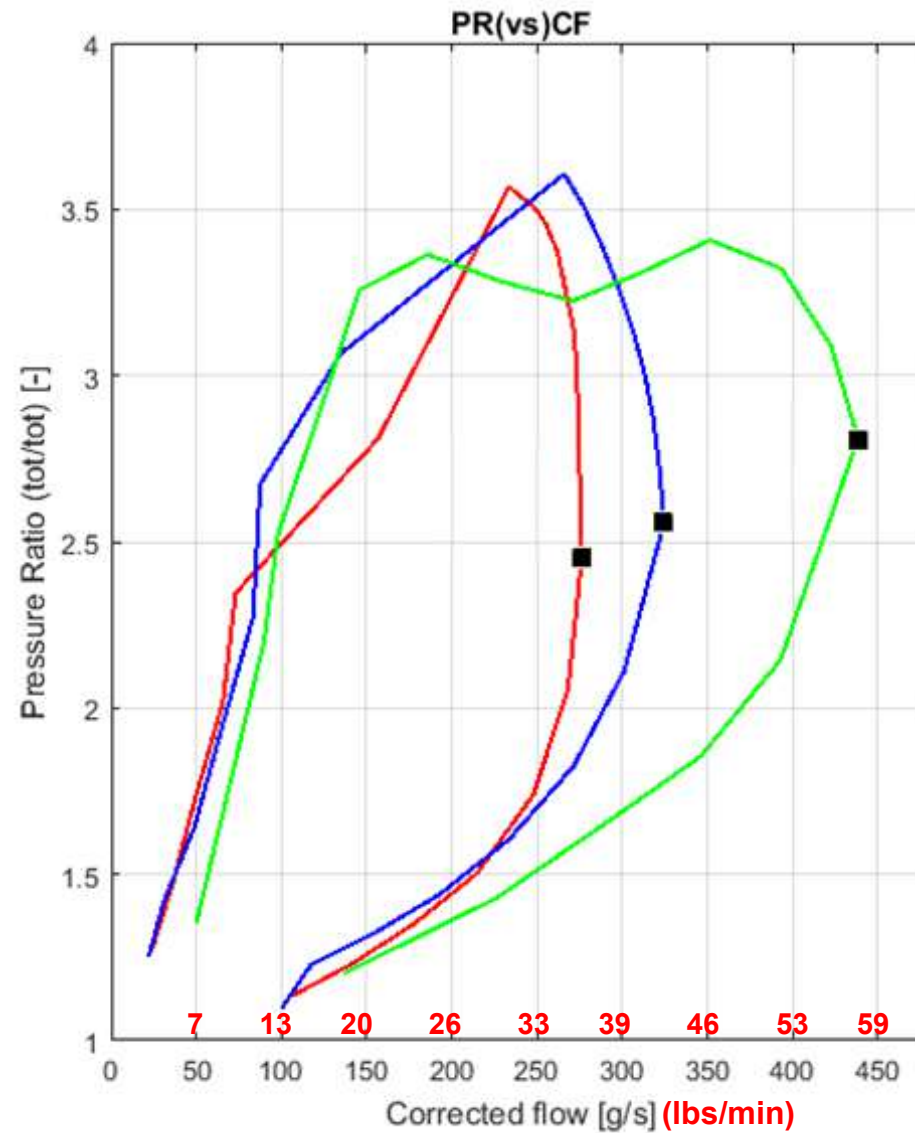


# Stage 2 (G25-660) - 898200-5001W



**Engine Dyno Developed and Qualified**

# COMPRESSOR MAP OVERLAY



Max Turbocharger Speed  
**PMAX Stage 1 (185K RPM)**  
**PMAX Stage 2 (165K RPM)**  
**IHI IS38**



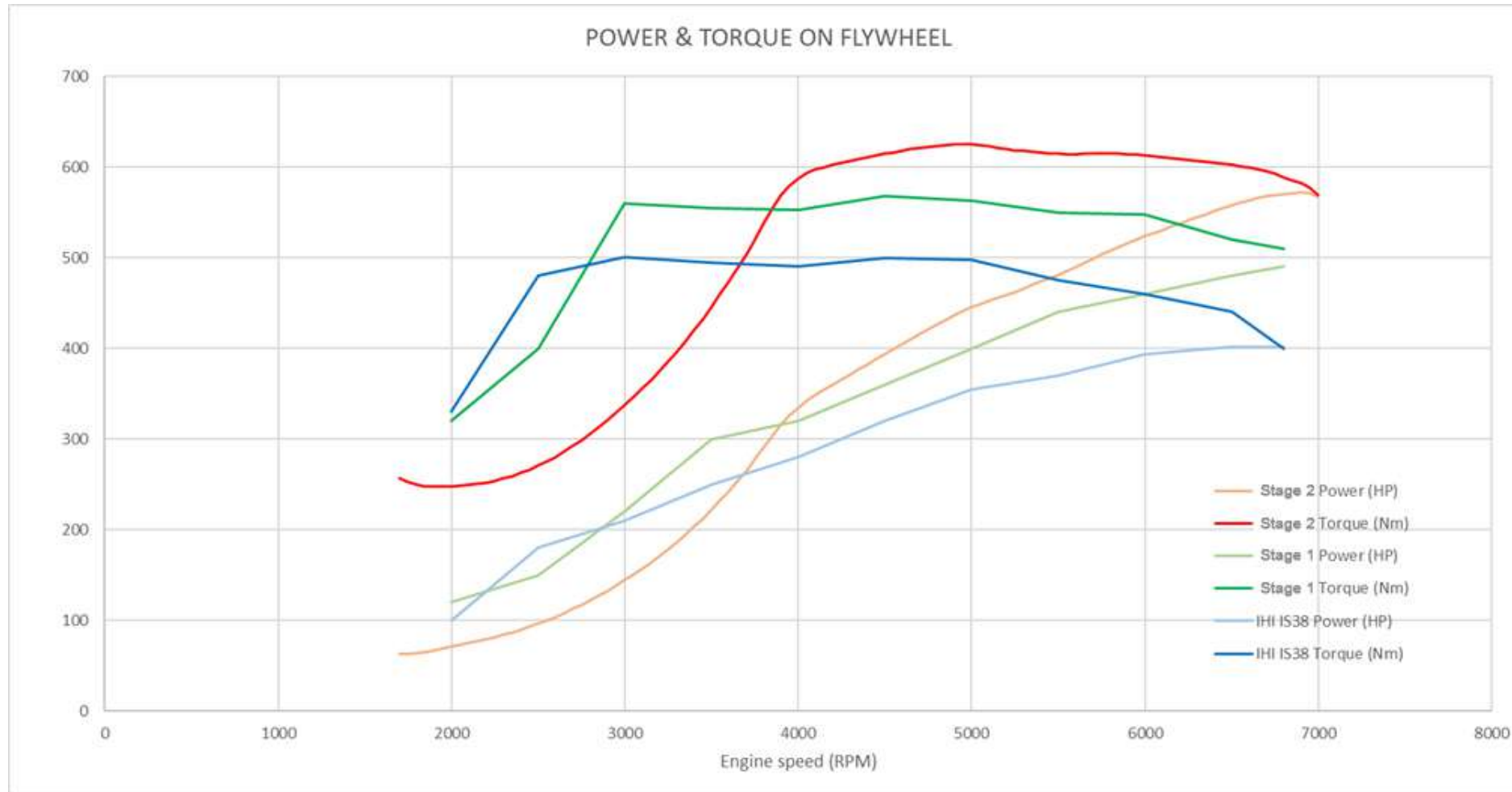
# PERFORMANCE MEASUREMENTS - CAR SETUP & MODS

- AUDI TT 2.0 TFSI (EA888 Gen 3)
- Garrett PMAX Stages 1 and 2 upgrade turbos
- Larger intercooler
- Custom exhaust system
- Reinforced pistons - lowered compression ratio of 9.2:1
- Upgraded fuel system - larger high pressure fuel pump and larger injectors
- Transmission upgrades - software upgrade only
- Cylinder head upgrades - valve springs only
- Fuel - 102 octane unleaded (Stage 2 also run with ethanol mixture)





# PERFORMANCE MEASUREMENTS - FLYWHEEL



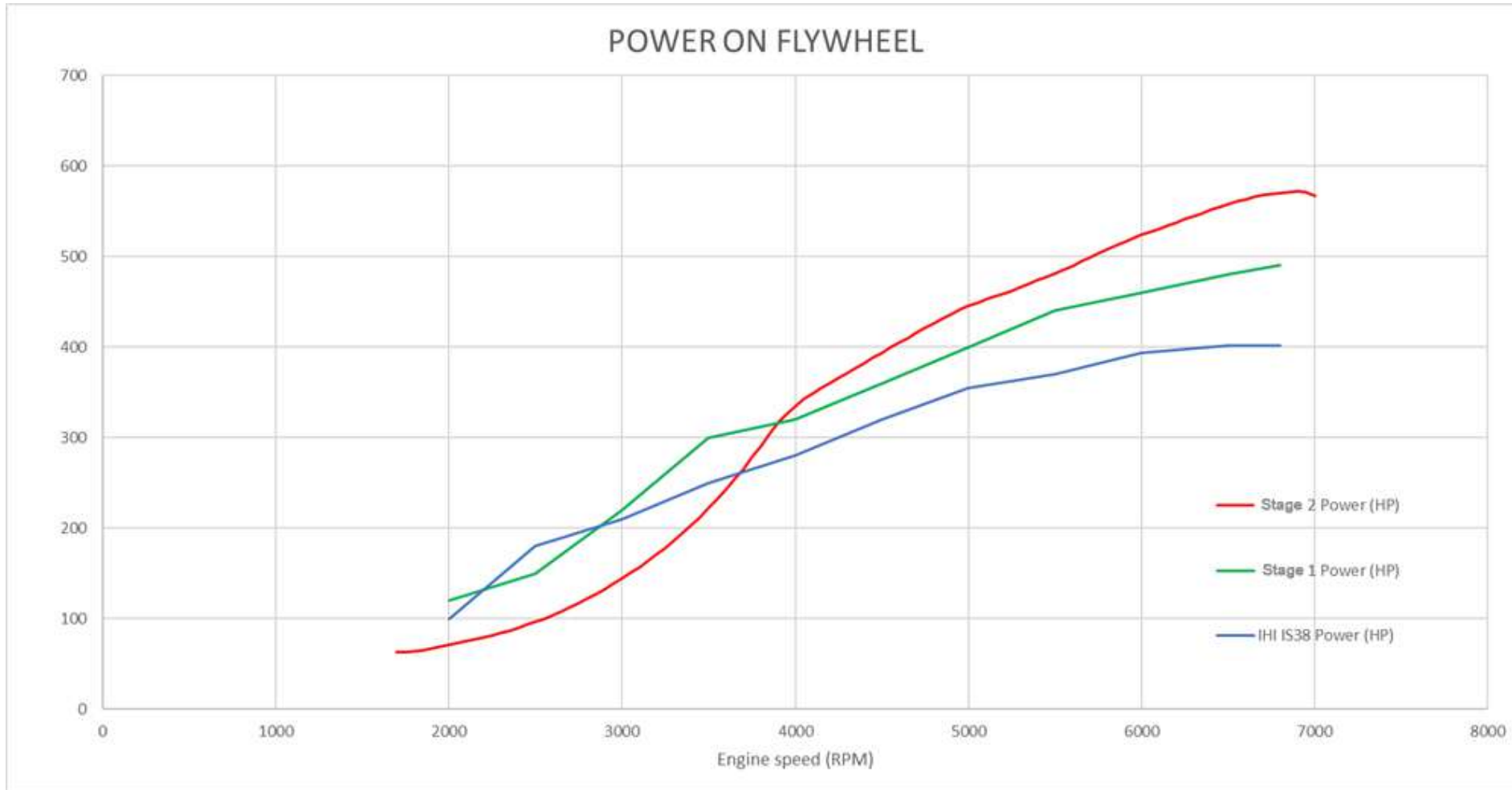
**Stage 2 \***  
571 PS (564 HP) / 6905 rpm  
625 Nm (461 lb-ft) / 4955 rpm

**Stage 1**  
490 PS (484 HP) / 6860 rpm  
568 Nm (419 lb-ft) / 4660 rpm

**IHI IS38**  
402 PS (396 HP) / 6565 rpm  
501 Nm (370 lb-ft) / 3065 rpm

\* 603 PS (595 HP) on ethanol mixture

# POWER MEASUREMENTS - FLYWHEEL



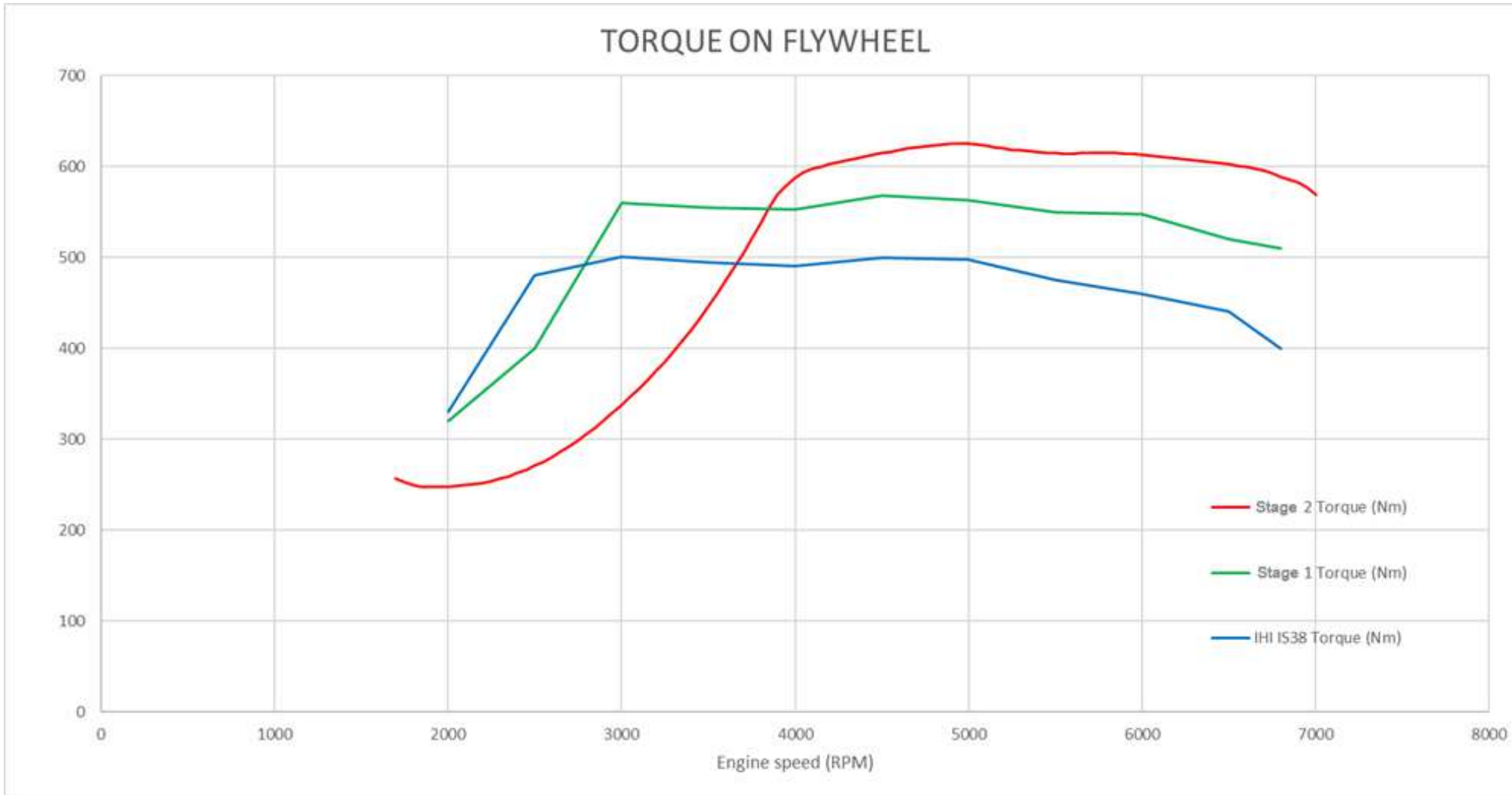
Stage 2 \*  
571 PS (564 HP) / 6905 rpm

Stage 1  
490 PS (484 HP) / 6860 rpm

IHI IS38  
402 PS (396 HP) / 6565 rpm

\* 603 PS (595 HP) on ethanol mixture

# TORQUE MEASUREMENTS - FLYWHEEL



Stage 2 \*  
625 Nm (461 lb-ft) / 4955 rpm

Stage 1  
568 Nm (419 lb-ft) / 4660 rpm

IHI IS38  
501 Nm (370 lb-ft) / 3065 rpm

\* 635 Nm (468 lb-ft) on ethanol mixture



# Garrett

ADVANCING MOTION

[www.garrettmotion.com](http://www.garrettmotion.com)



| [garrettmotion](#)